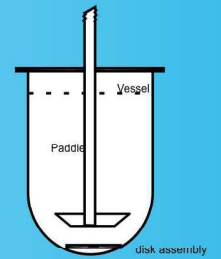
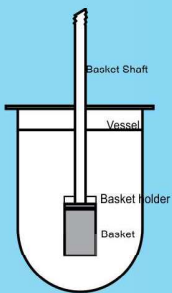
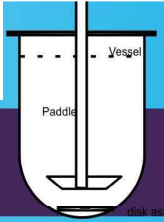


# Lab accessories



# Techno Search Analyticals

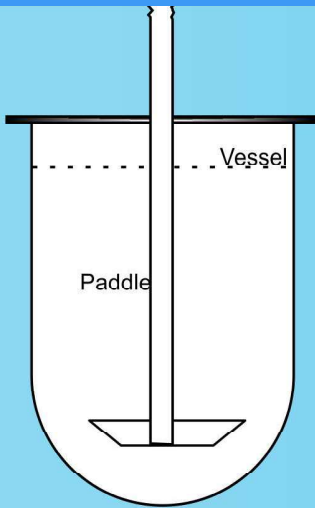


## Dissolution accessories

## Glass jar & accessories

Glass jars are very important in the dissolution testing. A very precise and accurate jar as per Pharmacopeia standards is required. Various bath manufacturers have adopted different styles to achieve the good results. Conformity as per USP, EP, JP available

**Our products are compatible with all the major OEM**



Jar Capacity: 1litre/ 2 Litre /250ml

Jar colour: Clear/Amber

Jar type: glass rim /plastic rim

Other variation: peak vessels /collar or collar less

Compatible type: most of the Bath as specified by manufacturer

Laser marked with serial no.s and Certified for conformity

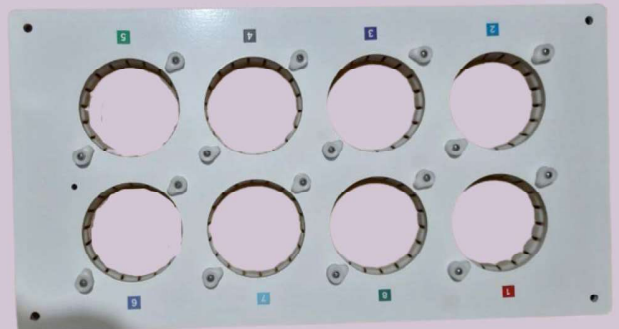


Jar Holding rings and locks

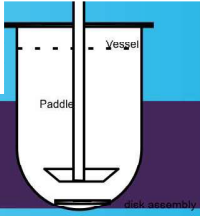
Jar lids- moulded, low evaporation type,  
compatible Jar lid as per machine models

Top plates and jar holding stand.

All associated parts and customised part available.



# Techno Search Analyticals



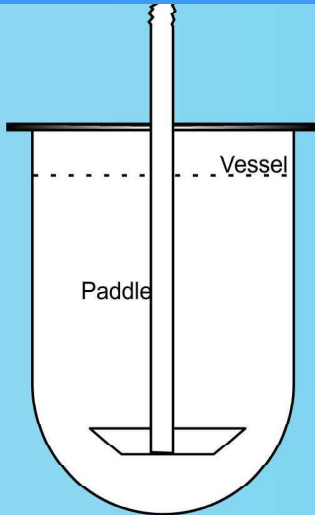
## Dissolution accessories

## Paddles&Basket

The USP apparatus 1 and 2, i.e. basket method and paddle method are the most used in dissolution testing.

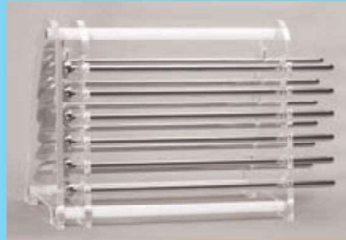
The USP given specifications are the standards followed, with given dimensions.

**Our product is compatible to all the major OEM**



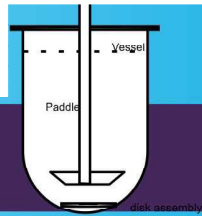
Paddle type: Single piece/detachable blade  
Paddle material: SS316/ SS316 Teflon coated/solid Teflon  
Paddle size : 1L/2L/250ml  
(As per jar volume)  
Paddle compatibility: matching as per the specific bath manufacturer

Basket shaft type: Single piece/detachable holder  
Basket shaft/holder material: SS316/ SS316 Teflon coated  
Basket holder: "O" ring /clip /conical  
Basket: SS316/SS316 Teflon coated  
Basket mesh:10/20/40/100/custom oversize  
Basket shaft size (as per vessel volume): 1L/2L/250ml  
Basket compatibility: matching as per the specific bath manufacturer mentioned



Others  
Felodipine and stationary basket  
Metformin sample holder 750/1000mg  
Paddle/basket shaft storage tray  
Basket tray  
Basket attachment/detachment tool





## Dissolution accessories

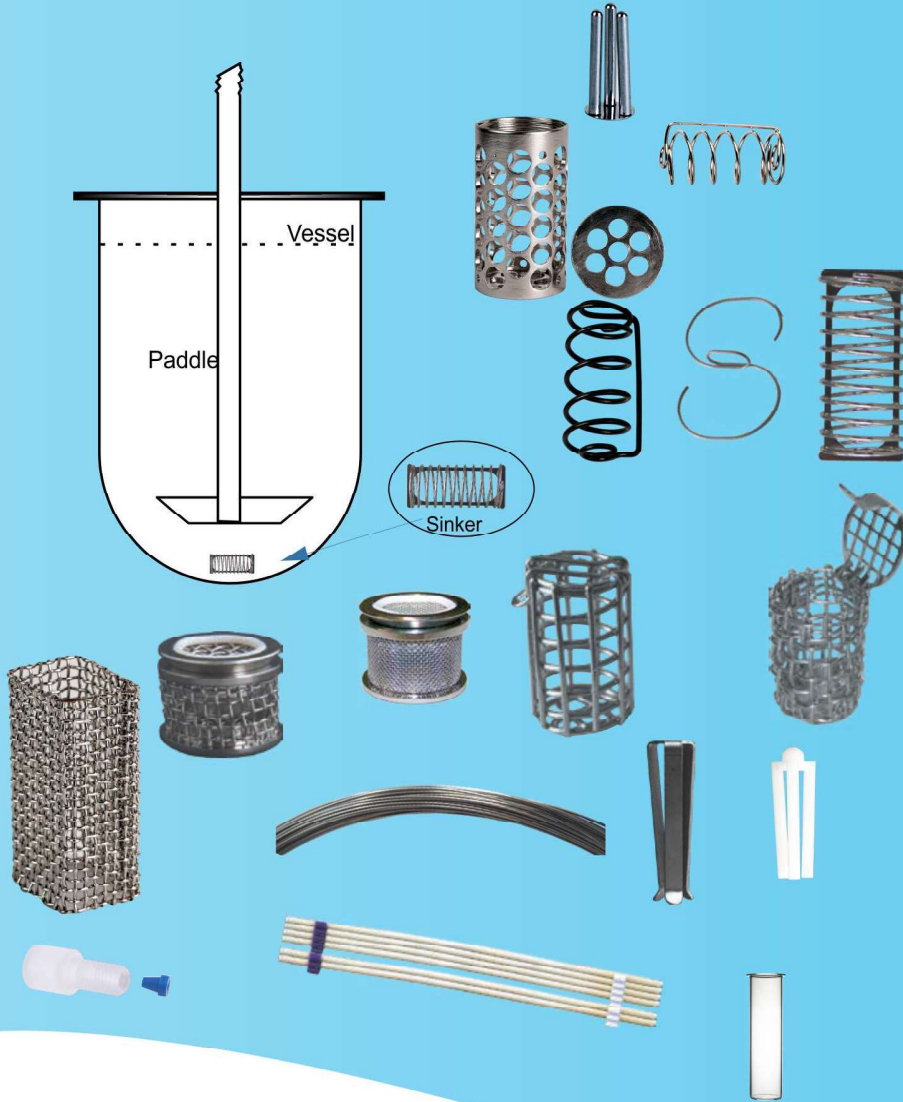
Sinkers are required when tablets tend to float or stick to sides of vessels. Sinkers should have minimum contact with tablets.

### Sinker types

- Capsule
- Helix
- Spiral
- Basket
- Japanese
- Wire
- 3 Prong
- S type
- Alfuzosin
- Material: SS316/Teflon coated

### Offline accessories

- Tygon tubing
- Marprene tubing
- Connectors
- Vials
- Intrinsic attachment
- Punch & die
- Mirror smooth base
- Bench top tablet press
- Attachment for holding assembly
- Tools for assembly



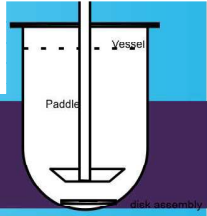
Intrinsic attachment



### Bio dissolution accessories

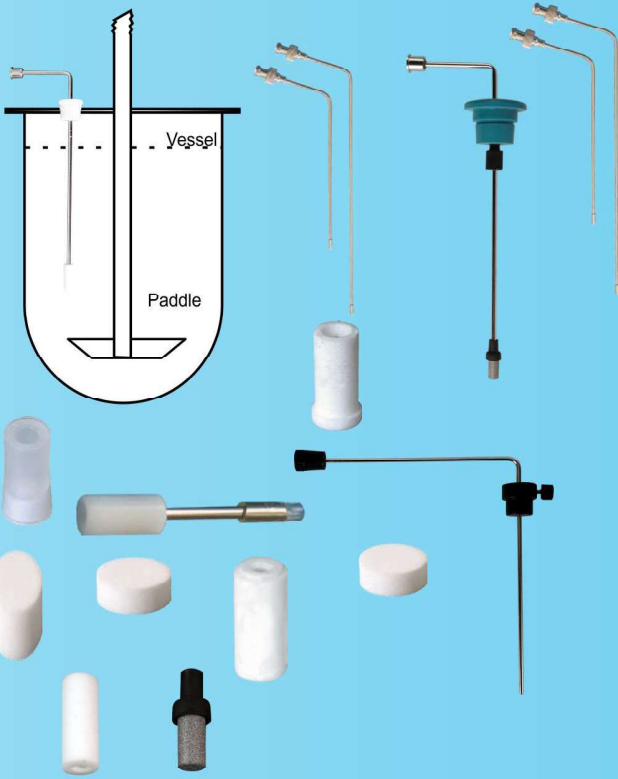
- Outer Glass: 100ml/300ml/
- Clear/amber
- Sample tube, threaded 100ml,
- Clear/amber
- Inner and upper cap
- Mesh screen: 10/20/30/40
- /100 SS/PP





## Dissolution accessories

Sampling the media is done by using cannula at the sampling position as per the media volume. The cannulas have various lengths, type, stopper, opening port and outer diameter so as to achieve right sampling position.



### Cannulas

Cannula type: Fixed length 500ml/900ml/1000ml  
 Cannula type: adjustable type suitable for different type of jar lids  
 Cannula stopper: variable as per the diameter of lid of manufacturer  
 Opening port: SS leuc/attached tygon tube  
 Cannula outer diameter: as per bath manufacturer standards  
 Cannula Bend: right angle /120 degree  
 Customised cannula available.

### Filters

10micronSS Full flow filter with holder  
 10 micron polyethylene /pvdf full flow filter  
 10 micron disc filter with adaptor  
 Other filters available as per requirement.

### Validation Kit for dissolution tester

depth gauge: with Vernier scale or digital, 1L/2L jar  
 Wobble gauge, thermometer, tachometer for rpm check  
 Vibration meter, digital level gauge, Stop watch..

Customised validation tools available as per bath manufacturer specs.

Calibrated and certified

### Paddle over disc

Opening mesh diameter: 33/50/55/65/mm

Mesh size options: 100/120 mesh

Custom size available.

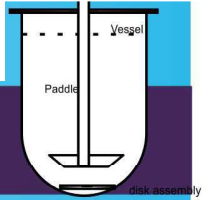


### Transdermal cylinder

Options: With/without extension

Material: SS316





## Lab accessories



**Disintegration tester accessories**  
Basket assembly :6 tube/3 tube/1 tube  
Basket holding type: spring loaded/  
magnetic/push type  
Glass beaker: 1L clear/amber  
Glass tube: for 6/3/1 tube baskets  
Mesh for basket: 10 mesh  
Guided disc For: 6 /3/1 tube  
Temp. probes: external probe/bath sensor

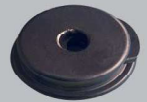


**Tap density accessories**  
Cylinder holder: 250/100/ml  
Glass cylinder: 250/100ml  
Acoustic cabinet

**Friability accessories**  
Friability drum  
Abrasion drum  
Locking knob



**Leak tester**  
dessicator 300mm  
dessicator 250mm  
Glass plate 300mm  
Glass plate 250mm  
Other: customised available



## Sieve shaker accessories

### Sieve shaker accessories

Sieves: 200/100mm

Wet sieve assembly

Locking Knob

Lid and receiver

Serialized marking

Sieve Calibration

Certified



ISO normal aperture Supplementary size R40/3	ASTM E11 - 01	BSS
6.0mm		
4.75mm		
4.00mm	No.5	No.4
3.35mm	No.6	No.5
2.80mm	No.7	No.6
2.36mm	No.8	No.7
2.00mm	No.10	No.8
1.70mm	No.12	No.10
1.40mm	No.14	No.12
1.18mm	No.16	No.14
1.00mm	No.18	No.16
850µm	No.20	No.18
710µm	No.25	No.22
600µm	No.30	No.25
500µm	No.35	No.30
425µm	No.40	No.36
355µm	No.45	No.44
300µm	No.50	No.52
250µm	No.60	No.60
212µm	No.70	No.72
180µm	No.80	No.85
150µm	No.100	No.100
125µm	No.120	No.120
106µm	No.140	No.150
90µm	No.170	No.170
75µm	No.200	No.200
63µm	No.230	No.240
53µm	No.270	No.300
45µm	No.325	No.350
38µm	No.400	
32µm	No.450	
25µm	No.500	
20µm	No.635	
10µm		



# Techno Search Analyticals

Portable Hardness tester

Volumeter

Powder flow tester



## Portable hardness tester

### Model: EHT - 01P

Hardness measurement capacity 500N  
Breaking force measurement  
PC connectivity via Rs232 port  
Display with backlit  
Tablet size 2mm to 28mm  
Unit N, kgf, lb  
PC connectivity via RS232 port  
Accuracy 0.5 % of full scale  
5Kg weight for validation available



## Volumeter

### Model: ELV – 1

Glass Baffles: 4  
Funnel mesh: 18 mesh/10 mesh(optional), SS316  
Cylindrical receiving cup of volume 25+/-0.05ml  
Cubical receiving cup of volume 16.39+/-0.16ml



## Powder flow tester

### Model: EPFT – 01

Simple check of powder flowability test  
Simple calculation of angle of repose using height gauge  
Outflow openings: 10/15/25mm